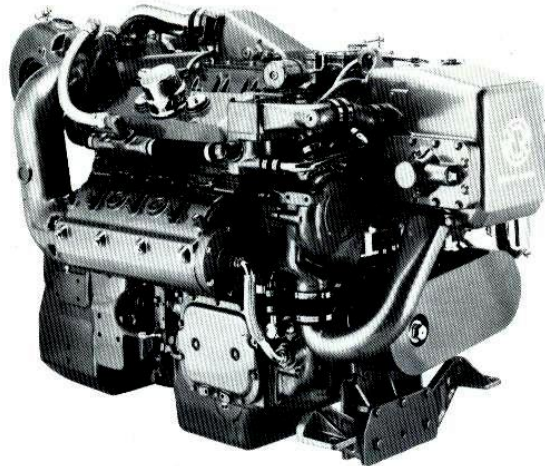


DETROIT DIESEL Series 92

**Marine Model
Pleasure Craft**

6V-92TA 450 BHP



General Specifications

Basic Engine	6V-92TA
Model—Port	8062-3404
Starboard	8062-7404
Description	Turbocharged-Aftercooled with Bypass Blower
Number of Cylinders	6
Bore and Stroke	4.84 in x 5.00 in (123 mm x 127 mm)
Displacement	552 cu in (9.05 liters)
Compression Ratio	17.0 to 1
Weight (dry)	3265 lbs (1481 kg)

Rated Power Output—Maximum

Gross Power	450 BHP (336 kW) @ 2300 RPM
Net Power	435 SHP (325 kW) @ 2300 RPM

Equipment Specifications

Air Inlet Housing—With manual or electrical shutdown
Air Silencer
Aftercooler—Two-pass with precooled coolant supply
Alternator—24 volt, 75 amp
Cooling System—Low profile cast iron expansion tank and raw water pump
Crankshaft Pulley—3 grooves, .50 inch wide
Engine Mounts—Resilient mounts for both engine and marine gear
Exhaust System—Fresh water-cooled manifolds and turbine housing
Flywheel Housing—SAE #2
Fuel System—Cam operated unit injectors with low pressure USCG type A external hoses, fuel filters and cooler
Governor—Variable speed
Lube Oil Filter—Full flow
Marine Gear—Detroit Diesel-507-2 (1.51, 1.77, 1.98 reduction ratios)
Oil Pan—Cast iron, designed for 0°-15° inclination angle, rear sump
Starting Motor—24 volt

Rating conditions: ISO 3046, SAE J1349, SAE J1228
77°F (25°C) and 29.31 in. Hg. (99kPa) Barometer (Dry)

For a complete listing of standard and optional equipment,
consult your authorized Detroit Diesel Corporation representative.

Photograph illustrates a typical marine engine

